

Kagawa  
Shikoku



# Mt. Shiude Wheelchair Taxi Service



*Beautiful Sakura for All*

2024 marks the beginning of greater accessibility for disabled visitors to Mt. Shiude with a taxi service for wheelchair users.

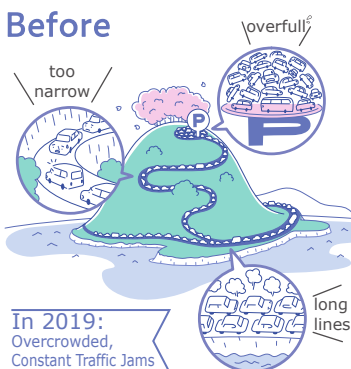
## Details

Mt. Shiude (or Shiudeyama) is a 352 meter-high peak famous for its cherry blossoms, which cover the summit of the mountain. However, in order to enjoy this scenery, guests must climb a steep path, making it inaccessible to wheelchair users in past years during the crowded weeks of Sakura Season. Beginning this year, a new Wheelchair Taxi Service is being tested that will run exclusively during Sakura Season to increase accessibility and allow wheelchair users to also enjoy the mountaintop sakura.

## Preventing Overtourism

### Reservation-Only Access to Mt. Shiude's Sakura Season

#### Before

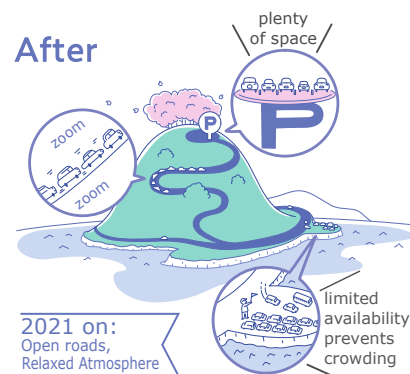


Too narrow to pass



3 hour wait for buses

#### After



Quiet environment



Better experience



Sakura-lined paths



Evening on the summit  
(March 2023)



Loop around the summit



Gorgeous ocean vistas  
(March 2023)



# Mt. Shiude Wheelchair Taxi Service

**Dates** (Sat.) Mar. 23 - (Wed.) April 10, 2024

**Available Groups** Group E

The service is limited to group E so that guests will not have to worry about rushing to return for their 'Leave By' time.

**Serviced Route** Ohama Fishing Port - Mt. Shiude Summit

Guests will be escorted to the accessible portions of the true summit

## Price

No fee will be charged for this service during the testing phase.  
1 caregiver may join the guest in the accessible taxi.

As for all personal vehicles, a Personal Vehicle Entry Ticket is required.

Weekdays: ¥1,750 Weekends: ¥2,300

## Entry Timetable (5 groups/day Reservations Required)

| Group | Check-in | Start-Leave By |
|-------|----------|----------------|
| A     | 8:30     | 9:00~10:30     |
| B     | 10:30    | 11:00~12:30    |
| C     | 12:30    | 13:00~14:30    |
| D     | 14:30    | 15:00~16:30    |
| E     | 16:30    | 17:00~18:30    |

## Intended for

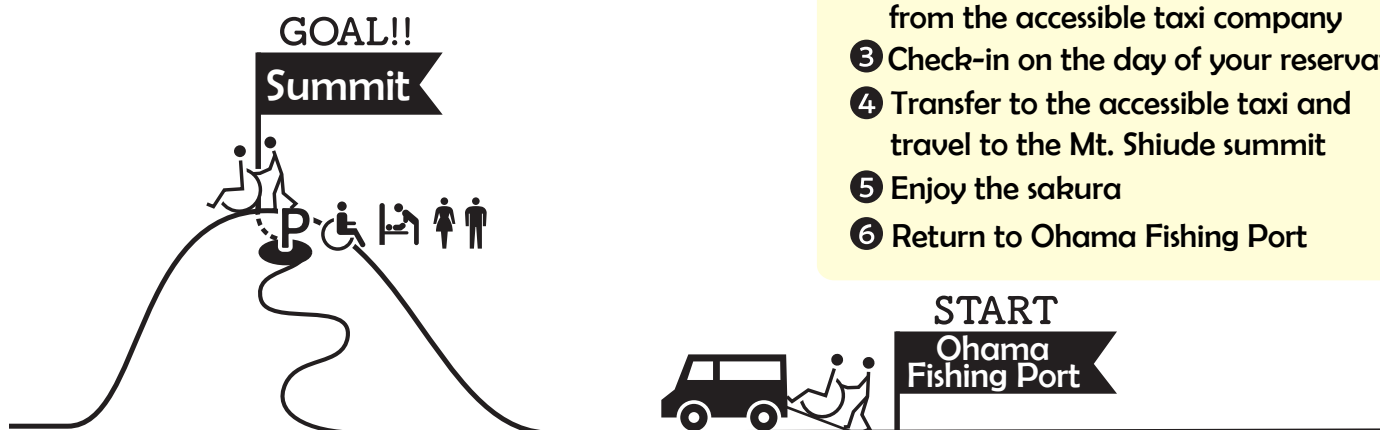
- People who use wheelchairs in their everyday life
- People with difficulty walking

## Availability

1 group per day (first-come, first-served)  
Advance reservation required by phone

## STEP

- 1 Reserve by calling MTEA
- 2 You will receive a confirmation call from the accessible taxi company
- 3 Check-in on the day of your reservation
- 4 Transfer to the accessible taxi and travel to the Mt. Shiude summit
- 5 Enjoy the sakura
- 6 Return to Ohama Fishing Port



The accessible taxi is a Suzuki Every (a light class vehicle).  
Please be aware that some large wheelchairs may not be able to be accommodated.

2024  
Mt. Shiude  
Sakura Season Info



[Learn More](#)



March 2024

Completion of an accessible bathroom scheduled

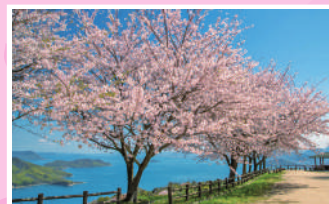


Even without an accessible taxi service, visitors with physical disabilities can enjoy some of the vistas of Mt. Shiude.

Purchase a Personal Vehicle Entry Ticket to see these sights.



Primary Parking Lot



Secondary Parking Lot

**Contact** Mitoyo Tourism and Exchange Authority TEL:0875-56-5880 (Closed Tues.) [info@mitoyo.org](mailto:info@mitoyo.org)

**Taxi Company** Kaigo Taxi Hikari (Espoir LLC)

**In cooperation with** Social Welfare Service Corp. Laugh